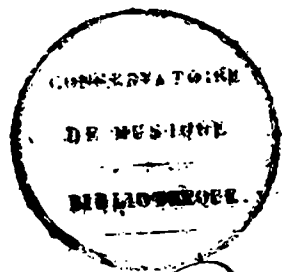


Concert de violons et Hautbois  
Donné au Soupe' Du Roy  
Le Seise Janvier 1707. Par la troupe  
Des Petits violons et Hautbois  
De Sa Majesté, composée par  
Monsieur Delully <sup>fils</sup> Surintendant, de  
La Musique de La chambre du Roy

6668=95



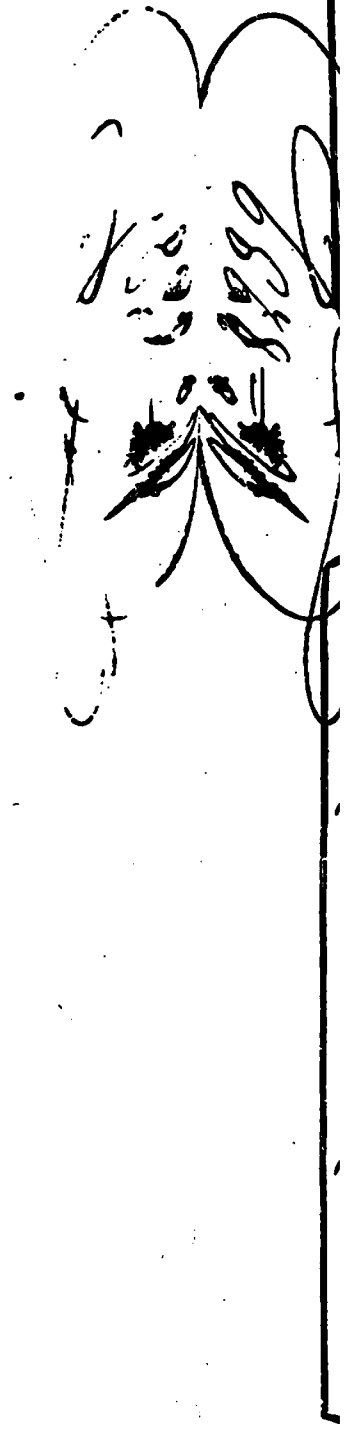
Copiée par M<sup>r</sup> Philidor Laisné  
ordinaire de La Musique du Roy  
Et garde de La Bibliothèque  
De Musique L'an ..... 1707

N<sup>o</sup>. F. 528

# Table

|  |    |
|--|----|
| Ouverture                                      | 1  |
| Sarabande                                      | 9  |
| Bourée   | 11 |
| Quatrieme Air en suites                        | 16 |
| Loure  | 23 |
| Premier Rigaudon                               | 27 |
| Deux. <sup>e</sup> Rigaudon pour les Haut-Bois | 29 |
| Grand Air en suite                             | 31 |
| Rondeau en suite                               | 35 |
| Grand Air de guerre                            | 40 |
| Premier Passepied                              | 45 |
| Deuxiesme Passepied                            | 49 |

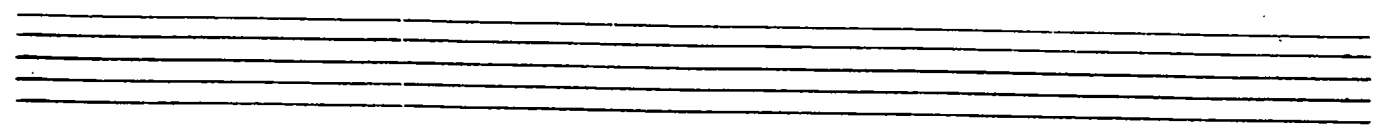
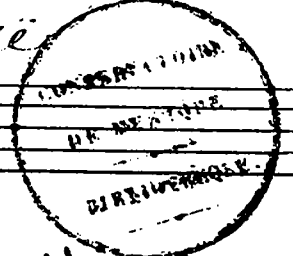
Air En fanfare  
Pasacailles



*Ouverture:*

*Handwritten signature or initials in a circular scribble.*

*Basse continue*



The first system of handwritten musical notation consists of five staves. The top staff is in treble clef with a key signature of one sharp (F#) and a 7/8 time signature. It contains a melodic line with eighth and sixteenth notes. The second staff is in bass clef with a key signature of one flat (Bb) and contains a bass line with quarter and eighth notes. The third staff is in treble clef with a key signature of one flat (Bb) and contains a melodic line with quarter and eighth notes. The fourth staff is in bass clef with a key signature of one flat (Bb) and contains a bass line with quarter and eighth notes. The fifth staff is in treble clef with a key signature of one flat (Bb) and contains a melodic line with eighth and sixteenth notes. The system concludes with a double bar line and repeat dots.

A set of five empty musical staves, consisting of five horizontal lines, positioned below the first system.

The second system of handwritten musical notation consists of five staves. The top staff is in treble clef with a key signature of one flat (Bb) and a 3/8 time signature. It contains a melodic line with eighth and sixteenth notes. The second staff is in bass clef with a key signature of one flat (Bb) and contains a bass line with eighth and sixteenth notes. The third staff is in treble clef with a key signature of one flat (Bb) and contains a melodic line with quarter and eighth notes. The fourth staff is in bass clef with a key signature of one flat (Bb) and contains a bass line with quarter and eighth notes. The fifth staff is in treble clef with a key signature of one flat (Bb) and contains a melodic line with quarter and eighth notes. The system concludes with a double bar line and repeat dots.

A set of five empty musical staves, consisting of five horizontal lines, positioned below the second system.

The first system of handwritten musical notation consists of five staves. The top staff is in treble clef, and the second staff is in bass clef. The remaining three staves are in bass clef. The notation includes various note values, accidentals (sharps and naturals), and slurs. There are some asterisks and 'x' marks above certain notes, possibly indicating corrections or specific performance instructions.

A set of five empty musical staves, consisting of two grand staves (treble and bass clefs) and three individual bass clef staves.

The second system of handwritten musical notation consists of five staves. The top staff is in treble clef, and the second staff is in bass clef. The remaining three staves are in bass clef. The notation includes various note values, accidentals (sharps and naturals), and slurs. There are some asterisks and 'x' marks above certain notes, possibly indicating corrections or specific performance instructions.

A set of five empty musical staves, consisting of two grand staves (treble and bass clefs) and three individual bass clef staves.

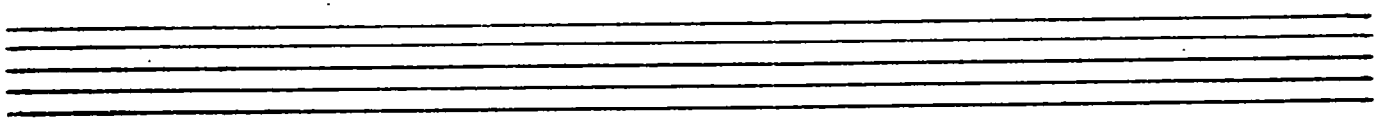
The first system of handwritten musical notation consists of five staves. The top staff is in treble clef with a key signature of one sharp (F#) and a common time signature (C). It contains a melodic line with eighth and sixteenth notes, including some beamed sixteenth notes. The second staff is in bass clef with a key signature of one flat (Bb) and a common time signature (C), featuring a bass line with quarter and eighth notes. The third staff is in bass clef with a key signature of one sharp (F#) and a common time signature (C), containing a bass line with quarter and eighth notes. The fourth staff is in bass clef with a key signature of one sharp (F#) and a common time signature (C), with a bass line of quarter and eighth notes. The fifth staff is in bass clef with a key signature of one sharp (F#) and a common time signature (C), showing a bass line with quarter notes and a dense sixteenth-note passage.

Two empty musical staves, consisting of five lines each, positioned between the first and second systems of notation.

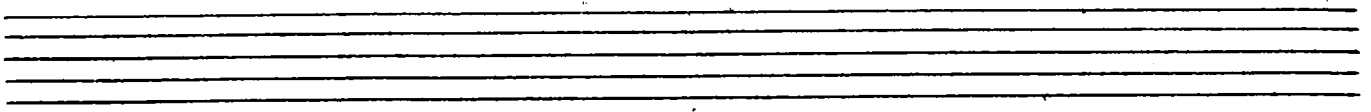
The second system of handwritten musical notation consists of five staves. The top staff is in treble clef with a key signature of one sharp (F#) and a common time signature (C), featuring a melodic line with quarter and eighth notes. The second staff is in bass clef with a key signature of one flat (Bb) and a common time signature (C), with a bass line of quarter and eighth notes. The third staff is in bass clef with a key signature of one sharp (F#) and a common time signature (C), containing a bass line with quarter and eighth notes. The fourth staff is in bass clef with a key signature of one flat (Bb) and a common time signature (C), with a bass line of quarter and eighth notes. The fifth staff is in bass clef with a key signature of one sharp (F#) and a common time signature (C), showing a bass line with quarter notes and a dense sixteenth-note passage.

Two empty musical staves, consisting of five lines each, positioned at the bottom of the page.

The first system of handwritten musical notation consists of five staves. The top staff begins with a treble clef and a key signature of one sharp (F#). The music features a variety of note values, including quarter, eighth, and sixteenth notes, along with rests and accidentals. The notation is dense and expressive, with some notes beamed together. The system concludes with a double bar line.

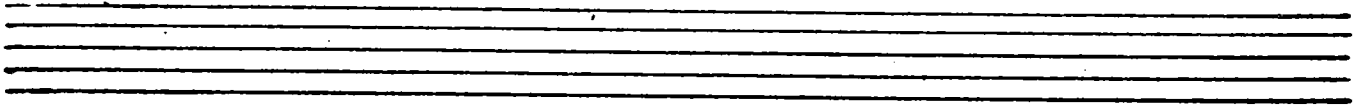


The second system of handwritten musical notation also consists of five staves. It continues the musical piece with similar notation to the first system, including treble clefs, key signatures, and various rhythmic patterns. The notation is fluid and shows signs of being a working draft. The system ends with a double bar line.

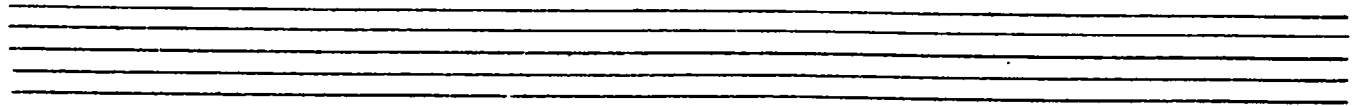




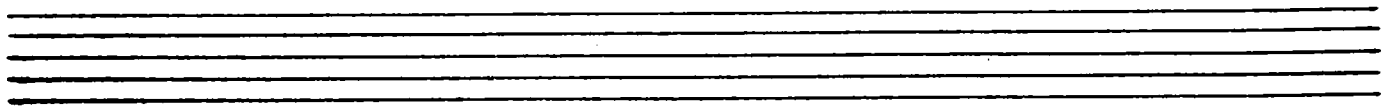
The first system of handwritten musical notation consists of five staves. The top staff is in treble clef and contains a melodic line with eighth and sixteenth notes, including some accidentals. The second staff is in bass clef and features a bass line with dotted rhythms and eighth notes. The third and fourth staves are in bass clef and contain more complex rhythmic patterns, possibly for a keyboard instrument. The fifth staff is in bass clef and shows a dense texture of sixteenth notes. The system concludes with a double bar line.



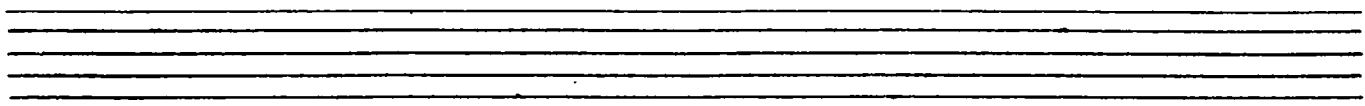
The second system of handwritten musical notation also consists of five staves. The top staff is in treble clef and contains a melodic line with eighth and sixteenth notes. The second staff is in bass clef and features a bass line with dotted rhythms and eighth notes. The third and fourth staves are in bass clef and contain more complex rhythmic patterns, possibly for a keyboard instrument. The fifth staff is in bass clef and shows a dense texture of sixteenth notes. The system concludes with a double bar line.



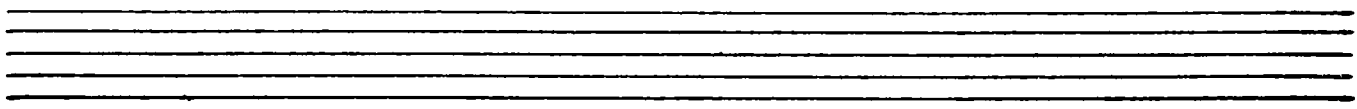
The first system of handwritten musical notation consists of five staves. The top staff is in treble clef with a key signature of one flat (Bb). The second staff is in bass clef with a key signature of one flat. The third and fourth staves are in bass clef with a key signature of one flat. The fifth staff is in bass clef with a key signature of one flat. The notation includes various note values, rests, and slurs.



The second system of handwritten musical notation consists of five staves. The top staff is in treble clef with a key signature of one flat. The second staff is in bass clef with a key signature of one flat. The third and fourth staves are in bass clef with a key signature of one flat. The fifth staff is in bass clef with a key signature of one flat. The notation includes various note values, rests, and slurs.



The first system of handwritten musical notation consists of five staves. The top staff is in treble clef with a key signature of one flat (B-flat). The second staff is in alto clef. The third staff is in tenor clef. The fourth staff is in bass clef. The fifth staff is in bass clef. The notation includes various note values, rests, and accidentals, with some notes marked with an 'x'.

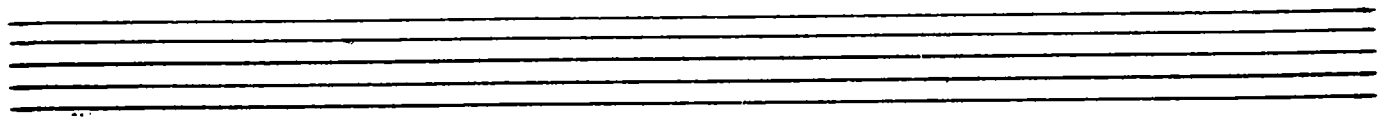


The second system of handwritten musical notation consists of five staves. The top staff is in treble clef with a key signature of one flat (B-flat). The second staff is in alto clef. The third staff is in tenor clef. The fourth staff is in bass clef. The fifth staff is in bass clef. The notation includes various note values, rests, and accidentals, with some notes marked with an 'x'.

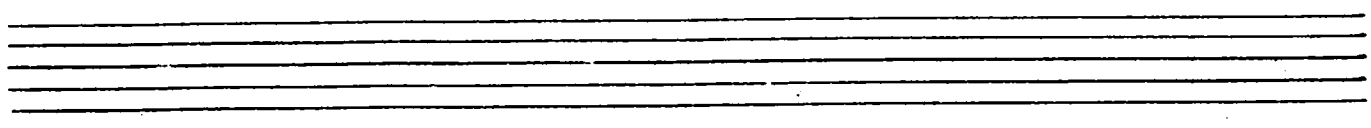


*Sarabande*

Handwritten musical score for the first system of a Sarabande. It consists of five staves. The top staff is in treble clef with a 3/4 time signature. The second staff is in bass clef. The third and fourth staves are in alto clef. The fifth staff is in tenor clef. The music is written in a single system with various note values and rests.



Handwritten musical score for the second system of a Sarabande. It consists of five staves. The top staff is in treble clef with a 3/4 time signature. The second staff is in bass clef. The third and fourth staves are in alto clef. The fifth staff is in tenor clef. The music is written in a single system with various note values and rests.



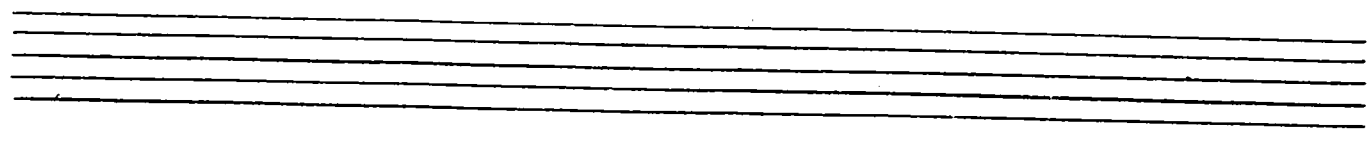
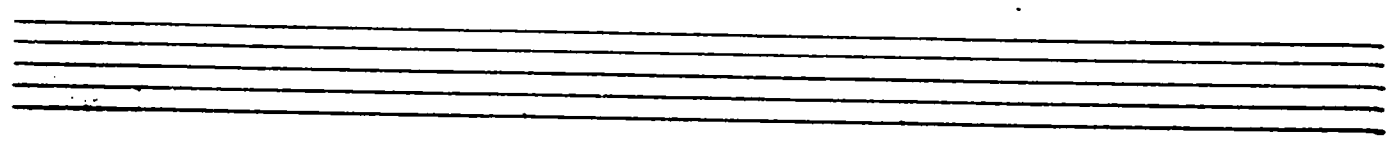
A handwritten musical score consisting of five staves. The first staff begins with a treble clef and a key signature of one flat (B-flat). The music is written in a style characteristic of 18th or 19th-century manuscript notation, featuring various note values, rests, and dynamic markings. The notation includes slurs, ties, and some accidentals. The piece concludes with a fermata on the final note of the fifth staff.

Two empty musical staves, consisting of five lines each, positioned between the first and second systems of music.

A second handwritten musical score, also consisting of five staves. It begins with a treble clef and a key signature of one flat. The notation is similar to the first system, with various rhythmic values and phrasing. The piece ends with a double bar line and repeat dots on the fifth staff.

Two empty musical staves, consisting of five lines each, positioned at the bottom of the page.

*Bourée*



The first system of handwritten musical notation consists of five staves. The top staff is in treble clef with a key signature of one sharp (F#) and a common time signature (C). It begins with a treble clef, a sharp sign, and a common time signature. The notation includes various note values, rests, and bar lines. The second staff is in bass clef with a key signature of one sharp and a common time signature. The third staff is in bass clef with a key signature of one sharp and a common time signature. The fourth staff is in bass clef with a key signature of one sharp and a common time signature. The fifth staff is in bass clef with a key signature of one sharp and a common time signature.

Two empty musical staves, one above the other, consisting of five lines each.

The second system of handwritten musical notation consists of five staves. The top staff is in treble clef with a key signature of one sharp and a common time signature. It begins with a treble clef, a sharp sign, and a common time signature. The notation includes various note values, rests, and bar lines. The second staff is in bass clef with a key signature of one sharp and a common time signature. The third staff is in bass clef with a key signature of one sharp and a common time signature. The fourth staff is in bass clef with a key signature of one sharp and a common time signature. The fifth staff is in bass clef with a key signature of one sharp and a common time signature.

Two empty musical staves, one above the other, consisting of five lines each.

The first system of the handwritten musical score consists of five staves. The top staff is in treble clef and contains a melodic line with eighth and sixteenth notes, including some beamed sixteenth notes. The second staff is in bass clef and contains a bass line with quarter and eighth notes. The third and fourth staves are also in bass clef and contain similar bass lines with quarter and eighth notes. The fifth staff is in bass clef and contains a more complex bass line with eighth and sixteenth notes, including some beamed sixteenth notes. The system concludes with a double bar line and a fermata over the final note.

A set of five empty musical staves, consisting of two grand staves (treble and bass clefs) and three individual staves.

The second system of the handwritten musical score consists of five staves. The top staff is in treble clef and contains a melodic line with quarter and eighth notes. The second staff is in bass clef and contains a bass line with quarter and eighth notes. The third and fourth staves are also in bass clef and contain similar bass lines with quarter and eighth notes. The fifth staff is in bass clef and contains a more complex bass line with eighth and sixteenth notes, including some beamed sixteenth notes. The system concludes with a double bar line and a fermata over the final note.

A set of five empty musical staves, consisting of two grand staves (treble and bass clefs) and three individual staves.



The first system of handwritten musical notation consists of five staves. The top staff is in treble clef, and the bottom staff is in bass clef. The music is written in a single system with a brace on the left. The notation includes various note values, rests, and accidentals, with some notes beamed together.

A set of five empty musical staves, consisting of two treble clef staves and three bass clef staves, positioned between the first and second systems of music.

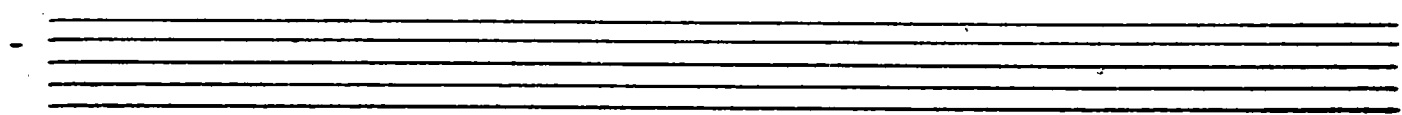
The second system of handwritten musical notation consists of five staves. The top staff is in treble clef, and the bottom staff is in bass clef. The music is written in a single system with a brace on the left. The notation includes various note values, rests, and accidentals, with some notes beamed together.

A set of five empty musical staves, consisting of two treble clef staves and three bass clef staves, positioned at the bottom of the page.

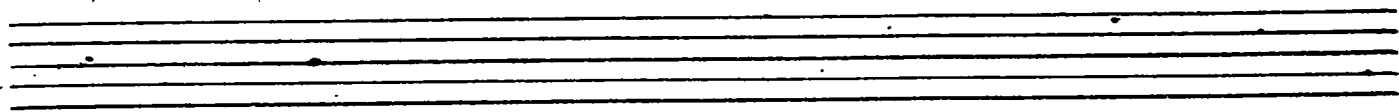
Handwritten musical notation on five staves. The notation includes various note values (quarter, eighth, and sixteenth notes), rests, and bar lines. The first staff begins with a treble clef and a key signature of one flat. The music is written in a single system, with each staff connected to the next by a wavy line. The notation is dense and appears to be a complex piece of music.

Seven empty musical staves, each consisting of five horizontal lines, arranged vertically. These staves are completely blank and serve as a template for further musical notation.

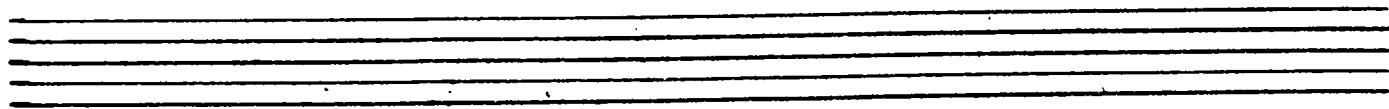
*Quatrieme air En Suite*



The first system of handwritten musical notation consists of five staves. The top staff is in treble clef with a key signature of one sharp (F#) and a common time signature (C). It contains a melodic line with eighth and sixteenth notes. The second staff is in bass clef with a key signature of one sharp (F#) and a common time signature (C), featuring a bass line with eighth and sixteenth notes. The third staff is in bass clef with a key signature of two sharps (F# and C#) and a common time signature (C), containing a bass line with eighth and sixteenth notes. The fourth staff is in bass clef with a key signature of two sharps (F# and C#) and a common time signature (C), containing a bass line with eighth and sixteenth notes. The fifth staff is in bass clef with a key signature of two sharps (F# and C#) and a common time signature (C), containing a bass line with eighth and sixteenth notes. The system concludes with a double bar line and repeat dots.



The second system of handwritten musical notation consists of five staves. The top staff is in treble clef with a key signature of one sharp (F#) and a common time signature (C). It contains a melodic line with eighth and sixteenth notes. The second staff is in bass clef with a key signature of one sharp (F#) and a common time signature (C), featuring a bass line with eighth and sixteenth notes. The third staff is in bass clef with a key signature of two sharps (F# and C#) and a common time signature (C), containing a bass line with eighth and sixteenth notes. The fourth staff is in bass clef with a key signature of two sharps (F# and C#) and a common time signature (C), containing a bass line with eighth and sixteenth notes. The fifth staff is in bass clef with a key signature of two sharps (F# and C#) and a common time signature (C), containing a bass line with eighth and sixteenth notes. The system concludes with a double bar line and repeat dots.



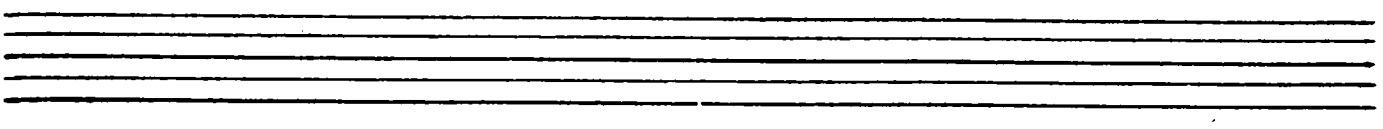
The first system of handwritten musical notation consists of five staves. The top staff is in treble clef with a key signature of one flat (B-flat). It contains a melodic line with various note values, including quarter, eighth, and sixteenth notes, along with rests and accidentals. The second staff is in bass clef and features a bass line with quarter and eighth notes. The third and fourth staves are also in bass clef and appear to be part of a multi-measure rest or a specific accompaniment pattern. The fifth staff continues the bass line with quarter and eighth notes. The system concludes with a double bar line.

A set of five empty musical staves, consisting of five horizontal lines, positioned below the first system of notation.

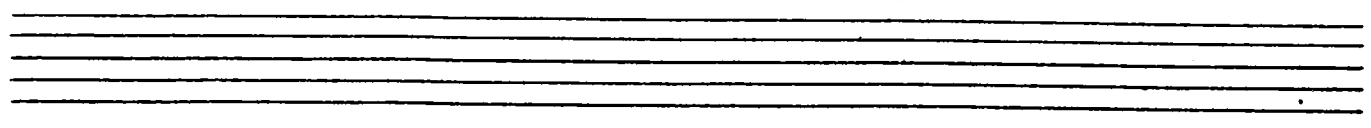
The second system of handwritten musical notation also consists of five staves. The top staff is in treble clef with a key signature of one flat. It contains a melodic line with quarter and eighth notes. The second staff is in bass clef and features a bass line with quarter notes and rests. The third and fourth staves are in bass clef and contain notes and rests. The fifth staff continues the bass line with quarter and eighth notes. The system concludes with a double bar line.

A set of five empty musical staves, consisting of five horizontal lines, positioned below the second system of notation.

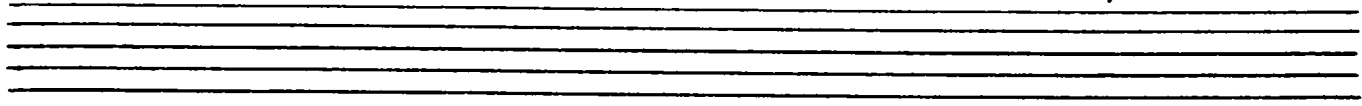
The first system of handwritten musical notation consists of five staves. The top staff is in treble clef and contains a melodic line with various notes, rests, and accidentals. The second staff is in bass clef and contains a bass line with notes and rests. The third staff is in bass clef and contains a bass line with notes and rests. The fourth staff is in bass clef and contains a bass line with notes and rests. The fifth staff is in bass clef and contains a bass line with notes and rests.



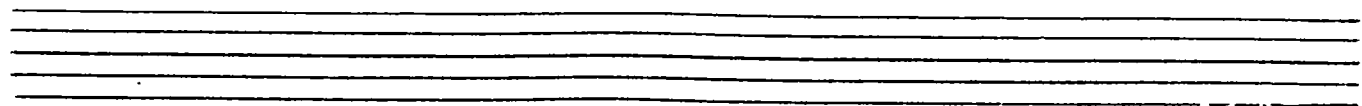
The second system of handwritten musical notation consists of five staves. The top staff is in treble clef and contains a melodic line with various notes, rests, and accidentals. The second staff is in bass clef and contains a bass line with notes and rests. The third staff is in bass clef and contains a bass line with notes and rests. The fourth staff is in bass clef and contains a bass line with notes and rests. The fifth staff is in bass clef and contains a bass line with notes and rests.



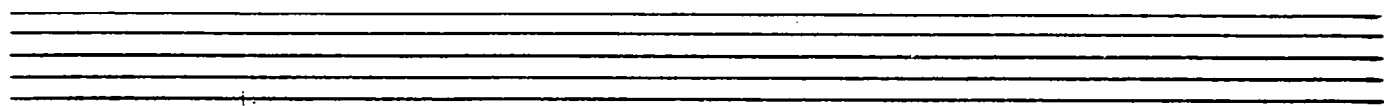
The first system of handwritten musical notation consists of five staves. The top staff is in treble clef and contains a melodic line with eighth and sixteenth notes, including some accidentals. The second staff is in bass clef and features a bass line with quarter and eighth notes. The third and fourth staves are in bass clef and contain mostly whole and half notes, with some rests. The fifth staff is in bass clef and continues the bass line with quarter and eighth notes.



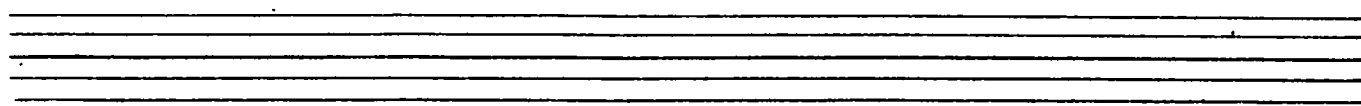
The second system of handwritten musical notation consists of five staves. The top staff is in treble clef and contains a melodic line with eighth and sixteenth notes. The second staff is in bass clef and features a bass line with quarter and eighth notes. The third and fourth staves are in bass clef and contain mostly whole and half notes, with some rests. The fifth staff is in bass clef and continues the bass line with quarter and eighth notes.



The first system of the handwritten musical score consists of five staves. The top staff is in treble clef and contains a melodic line with eighth and sixteenth notes, including some accidentals. The second staff is in bass clef and features a series of quarter notes with stems pointing down, some with beams connecting them. The third staff is in bass clef and contains a melodic line with eighth notes and some accidentals. The fourth staff is in bass clef and shows a series of quarter notes with stems pointing down, similar to the second staff. The fifth staff is in bass clef and contains a melodic line with eighth notes and some accidentals. The system concludes with a double bar line.



The second system of the handwritten musical score consists of five staves. The top staff is in treble clef and contains a melodic line with eighth notes and some accidentals. The second staff is in bass clef and features a series of quarter notes with stems pointing down, some with beams connecting them. The third staff is in bass clef and contains a melodic line with eighth notes and some accidentals. The fourth staff is in bass clef and shows a series of quarter notes with stems pointing down, similar to the second staff. The fifth staff is in bass clef and contains a melodic line with eighth notes and some accidentals. The system concludes with a double bar line.





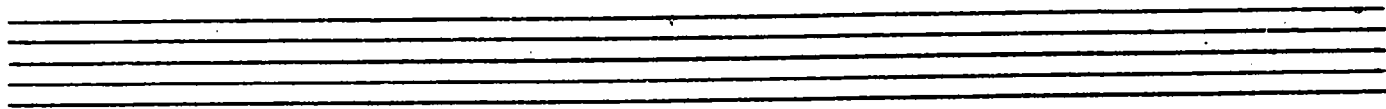
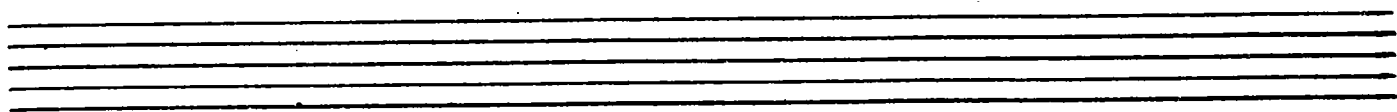
A handwritten musical score consisting of five staves. The first staff is in treble clef with a key signature of one flat (B-flat). The second staff is in bass clef with a key signature of one flat. The third and fourth staves are in bass clef with a key signature of two flats (B-flat and E-flat). The fifth staff is in treble clef with a key signature of two flats. The music includes various note values, rests, and accidentals.

Three empty musical staves, consisting of three sets of five horizontal lines.

A handwritten musical score consisting of five staves. The first staff is in treble clef with a key signature of one flat. The second, third, and fourth staves are in bass clef with a key signature of one flat. The fifth staff is in treble clef with a key signature of one flat. The music includes notes, rests, and bar lines.

Three empty musical staves, consisting of three sets of five horizontal lines.

*Loure*



The first system of handwritten musical notation consists of five staves. The top staff is in treble clef with a key signature of one sharp (F#) and a 2/4 time signature. It contains a melodic line with eighth and sixteenth notes. The second staff is in alto clef with a key signature of one sharp and contains a similar melodic line. The third staff is in bass clef with a key signature of one sharp and contains a bass line with eighth notes. The fourth and fifth staves are in bass clef with a key signature of one sharp and contain a bass line with quarter notes and rests.

The second system of handwritten musical notation consists of five staves. The top staff is in treble clef with a key signature of one sharp and a 2/4 time signature. It contains a melodic line with eighth notes and rests. The second staff is in alto clef with a key signature of one sharp and contains a melodic line with eighth notes and rests. The third staff is in bass clef with a key signature of one sharp and contains a bass line with quarter notes and rests. The fourth and fifth staves are in bass clef with a key signature of one sharp and contain a bass line with quarter notes and rests.

*Handwritten signature or scribble*

Handwritten musical notation on five staves. The notation includes various note values, rests, and bar lines. The first staff begins with a treble clef and a key signature of one flat. The music is written in a fluid, cursive style.

Handwritten text in a circular scribble, possibly a signature or initials.

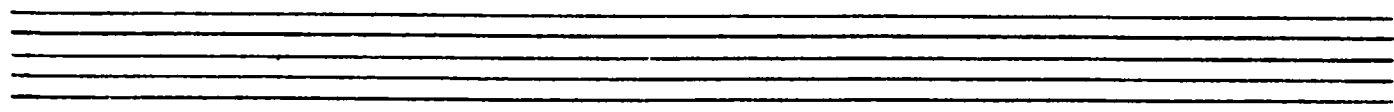
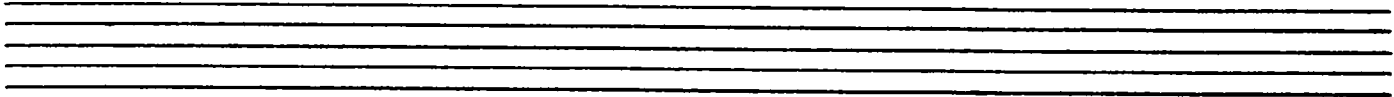
Handwritten musical notation on five staves. The notation continues from the previous system, featuring similar note values and rests. The handwriting remains consistent throughout.

Four empty musical staves at the bottom of the page, indicating the end of the written music on this page.

A handwritten musical score consisting of five staves. The first staff is in treble clef with a key signature of one sharp (F#) and a common time signature (C). It contains a melodic line with eighth and sixteenth notes. The second staff is in bass clef with a common time signature, featuring a bass line with quarter and eighth notes. The third and fourth staves are in treble clef with a common time signature, containing melodic lines with various note values and rests. The fifth staff is in bass clef with a common time signature, featuring a bass line with quarter and eighth notes. The score concludes with a double bar line and a fermata on the final note of the fifth staff.

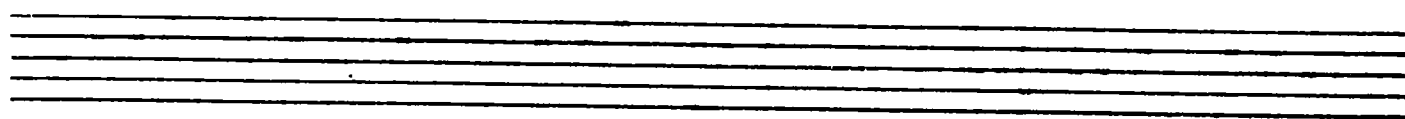
A handwritten musical score consisting of five staves. The first staff is in treble clef with a key signature of one sharp (F#) and a common time signature (C). It contains a melodic line with eighth and sixteenth notes. The second staff is in bass clef with a common time signature, featuring a bass line with quarter and eighth notes. The third and fourth staves are in treble clef with a common time signature, containing melodic lines with various note values and rests. The fifth staff is in bass clef with a common time signature, featuring a bass line with quarter and eighth notes. The score concludes with a double bar line and a fermata on the final note of the fifth staff.

*Premier Rigaudon*



—

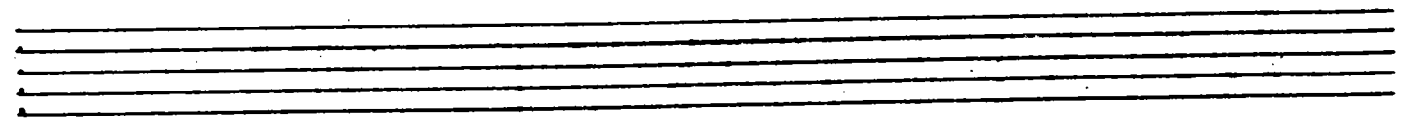
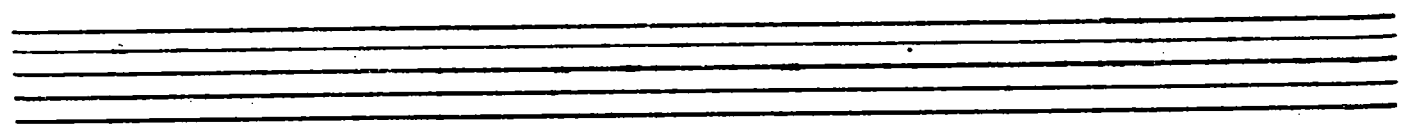
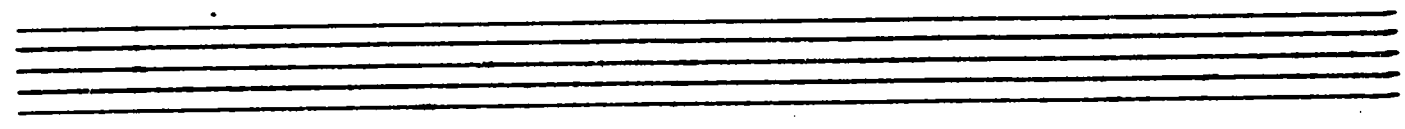
The first system of handwritten musical notation consists of five staves. The top staff is in treble clef with a key signature of one flat (B-flat). The second and third staves are in alto clef with a key signature of two flats (B-flat, E-flat). The fourth and fifth staves are in bass clef with a key signature of two flats (B-flat, E-flat). The notation includes various rhythmic values such as quarter notes, eighth notes, and sixteenth notes, along with rests and accidentals (sharps and naturals).



The second system of handwritten musical notation consists of five staves. The top staff is in treble clef with a key signature of one flat (B-flat). The second and third staves are in alto clef with a key signature of two flats (B-flat, E-flat). The fourth and fifth staves are in bass clef with a key signature of two flats (B-flat, E-flat). The notation includes various rhythmic values such as quarter notes, eighth notes, and sixteenth notes, along with rests and accidentals (sharps and naturals).

The third system of handwritten musical notation consists of two staves. The top staff is in treble clef with a key signature of one flat (B-flat). The bottom staff is in bass clef with a key signature of two flats (B-flat, E-flat). The notation includes various rhythmic values such as quarter notes, eighth notes, and sixteenth notes, along with rests and accidentals (sharps and naturals).

*Deux.<sup>e</sup> Rigaudon.*





The first system of handwritten musical notation consists of three staves. The top staff is in treble clef with a key signature of one flat (Bb) and a common time signature (C). It contains a melodic line with eighth and sixteenth notes, including some beamed sixteenth notes. The middle staff is also in treble clef and contains a similar melodic line. The bottom staff is in bass clef and contains a bass line with quarter and eighth notes. The system concludes with a double bar line and a fermata.

Two empty musical staves, one in treble clef and one in bass clef, positioned below the first system.

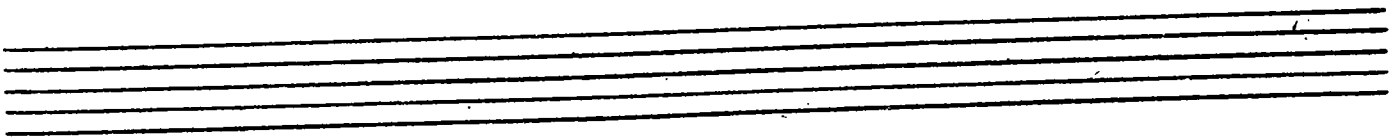
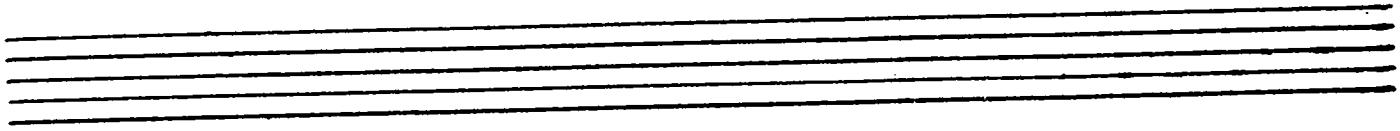
The second system of handwritten musical notation consists of three staves. The top staff is in treble clef with a key signature of one flat (Bb) and a common time signature (C). It contains a melodic line with quarter and eighth notes. The middle staff is also in treble clef and contains a similar melodic line. The bottom staff is in bass clef and contains a bass line with quarter and eighth notes. The system concludes with a double bar line and a fermata.

Two empty musical staves, one in treble clef and one in bass clef, positioned below the second system.

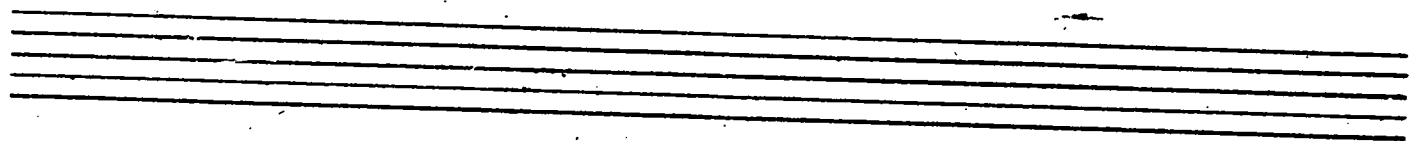
The third system of handwritten musical notation consists of two staves. The top staff is in treble clef with a key signature of one flat (Bb) and a common time signature (C). It contains a melodic line with quarter and eighth notes. The bottom staff is in bass clef and contains a bass line with quarter and eighth notes. The system concludes with a double bar line and a fermata.

Two empty musical staves, one in treble clef and one in bass clef, positioned below the third system.

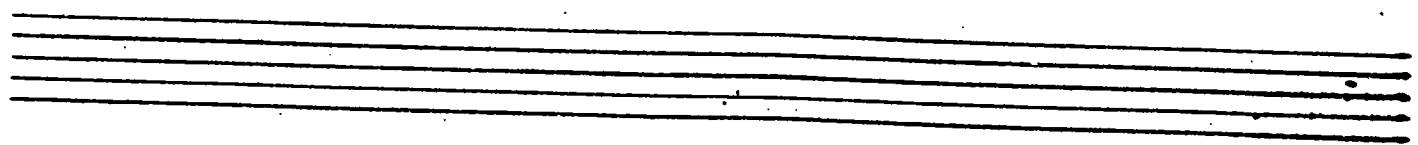
*Grand Air En Suite*



The first system of the handwritten musical score consists of five staves. The top staff begins with a treble clef and a key signature of one flat (B-flat). The music features a variety of note values, including eighth and sixteenth notes, as well as rests. The notation is dense, with many beamed notes and some slurs. The system concludes with a double bar line.



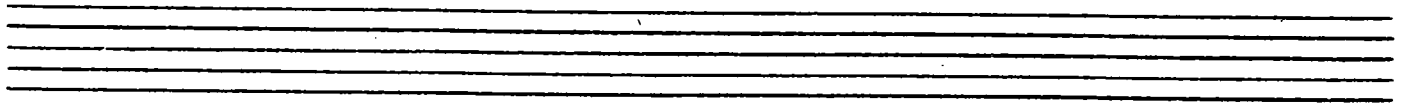
The second system of the handwritten musical score also consists of five staves. It continues the musical notation from the first system, featuring similar note values and clefs. The notation is consistent in style, with beamed notes and rests. The system ends with a double bar line.



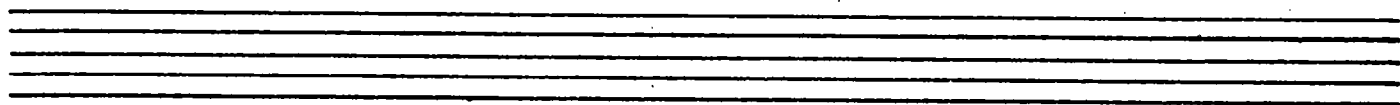
The first system of handwritten musical notation consists of five staves. The top staff is in treble clef with a key signature of one sharp (F#). It contains a melodic line with eighth and sixteenth notes, some beamed together, and rests. The second staff is in bass clef and contains a bass line with quarter and eighth notes. The third staff is in bass clef and contains a bass line with quarter and eighth notes. The fourth staff is in bass clef and contains a bass line with quarter and eighth notes. The fifth staff is in bass clef and contains a bass line with quarter and eighth notes. The system concludes with a double bar line.



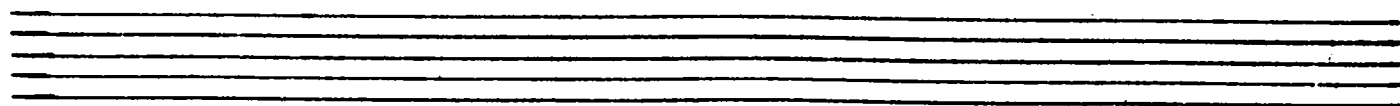
The second system of handwritten musical notation consists of five staves. The top staff is in treble clef with a key signature of one sharp (F#). It contains a melodic line with eighth and sixteenth notes, some beamed together, and rests. The second staff is in bass clef and contains a bass line with quarter and eighth notes. The third staff is in bass clef and contains a bass line with quarter and eighth notes. The fourth staff is in bass clef and contains a bass line with quarter and eighth notes. The fifth staff is in bass clef and contains a bass line with quarter and eighth notes. The system concludes with a double bar line.



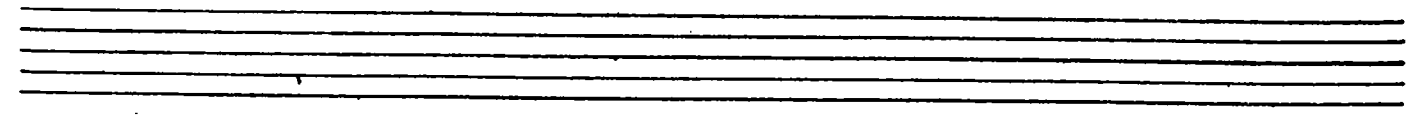
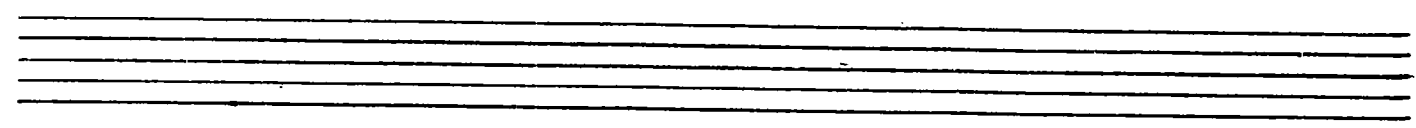
The first system of handwritten musical notation consists of five staves. The top staff is in treble clef with a key signature of one flat (B-flat). It contains a melodic line with eighth and sixteenth notes, some with accents. The second staff is in bass clef with a key signature of one flat, featuring a similar melodic line. The third and fourth staves are in bass clef with a key signature of one flat, containing a more rhythmic accompaniment with quarter and eighth notes. The fifth staff is in treble clef with a key signature of one flat, featuring a melodic line with many sixteenth notes. The system concludes with a double bar line.



The second system of handwritten musical notation consists of five staves. The top staff is in treble clef with a key signature of one flat. It contains a melodic line with quarter and eighth notes, ending with a double bar line. The second staff is in bass clef with a key signature of one flat, featuring a melodic line with quarter and eighth notes. The third and fourth staves are in bass clef with a key signature of one flat, containing a rhythmic accompaniment with quarter and eighth notes. The fifth staff is in treble clef with a key signature of one flat, featuring a melodic line with quarter and eighth notes. The system concludes with a double bar line.



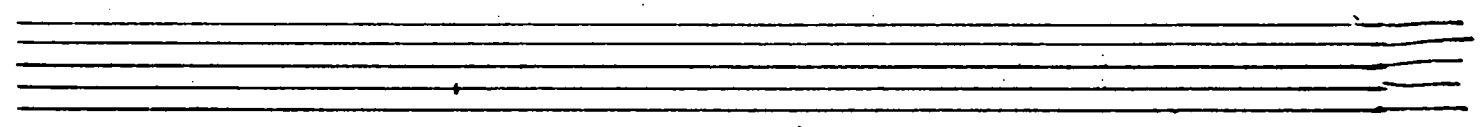
*Rondeau En Suite*



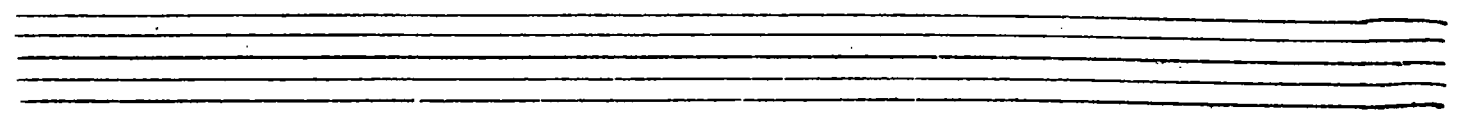
The first system of handwritten musical notation consists of five staves. The top staff is in treble clef with a key signature of one flat (B-flat) and a 9/8 time signature. It contains a melodic line with eighth and sixteenth notes, including some accidentals. The second staff is in bass clef with a key signature of one flat, featuring a bass line with eighth notes and rests. The third staff is in bass clef with a key signature of one flat, containing a bass line with eighth notes and rests. The fourth staff is in bass clef with a key signature of one flat, containing a bass line with eighth notes and rests. The fifth staff is in bass clef with a key signature of one flat, containing a bass line with eighth notes and rests. Below the staves are three empty lines.

The second system of handwritten musical notation consists of five staves. The top staff is in treble clef with a key signature of one flat and a 9/8 time signature. It contains a melodic line with eighth and sixteenth notes, including some accidentals. The second staff is in bass clef with a key signature of one flat, featuring a bass line with eighth notes and rests. The third staff is in bass clef with a key signature of one flat, containing a bass line with eighth notes and rests. The fourth staff is in bass clef with a key signature of one flat, containing a bass line with eighth notes and rests. The fifth staff is in bass clef with a key signature of one flat, containing a bass line with eighth notes and rests. Below the staves are three empty lines.

The first system of handwritten musical notation consists of five staves. The top staff is in treble clef and begins with a key signature of one sharp (F#). The second staff is in bass clef. The third and fourth staves are in alto clef. The fifth staff is in bass clef. The notation includes various note values, rests, and accidentals, with some notes marked with an asterisk (\*).

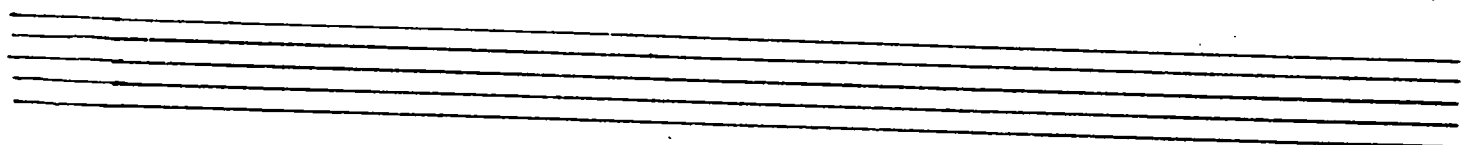


The second system of handwritten musical notation consists of five staves, similar in layout to the first system. The top staff is in treble clef and begins with a key signature of one sharp (F#). The second staff is in bass clef. The third and fourth staves are in alto clef. The fifth staff is in bass clef. The notation includes various note values, rests, and accidentals, with some notes marked with an asterisk (\*).

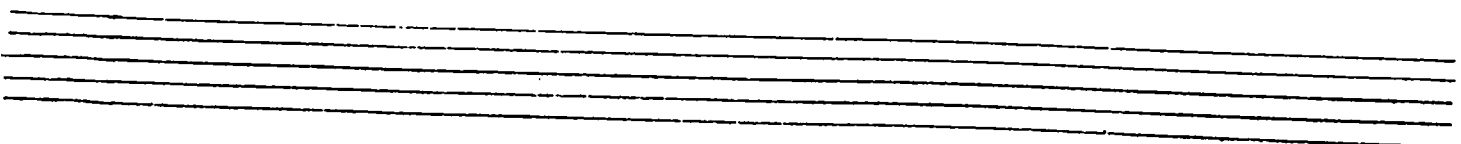




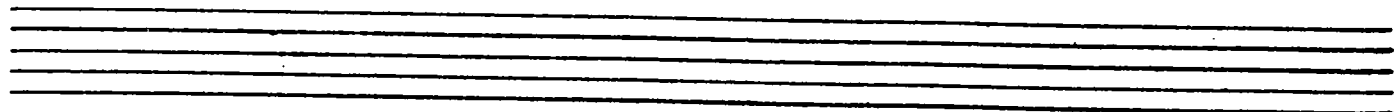
The first system of the handwritten musical score consists of five staves. The top staff is in treble clef and contains a melodic line with eighth and sixteenth notes, including several accidentals (sharps and naturals). The second staff is in bass clef and features a similar melodic line. The third and fourth staves are in alto clefs (C4 and C5) and contain rhythmic accompaniment with quarter and eighth notes. The fifth staff is in bass clef and continues the melodic line. The system concludes with a double bar line.



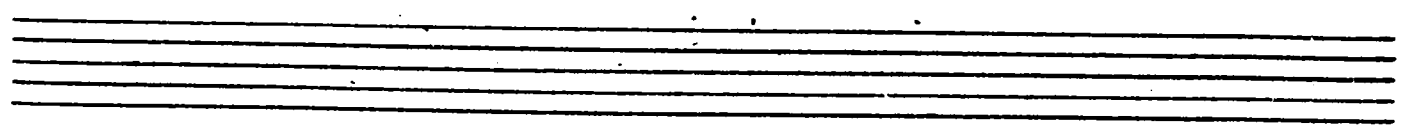
The second system of the handwritten musical score consists of five staves. The top staff is in treble clef and contains a melodic line with eighth and sixteenth notes, including several accidentals (sharps and naturals). The second staff is in bass clef and features a similar melodic line. The third and fourth staves are in alto clefs (C4 and C5) and contain rhythmic accompaniment with quarter and eighth notes. The fifth staff is in bass clef and continues the melodic line. The system concludes with a double bar line.



The first system of the handwritten musical score consists of five staves. The top staff is in treble clef with a key signature of one flat (B-flat). It contains a melodic line with eighth and sixteenth notes, including some accidentals. The second staff is in bass clef with a key signature of one flat, featuring a bass line with eighth notes and rests. The third staff is in bass clef with a key signature of two flats (B-flat and E-flat), containing a bass line with eighth notes and rests. The fourth staff is in bass clef with a key signature of two flats, continuing the bass line. The fifth staff is in bass clef with a key signature of one flat, featuring a more complex bass line with sixteenth notes and rests. The system concludes with a double bar line.

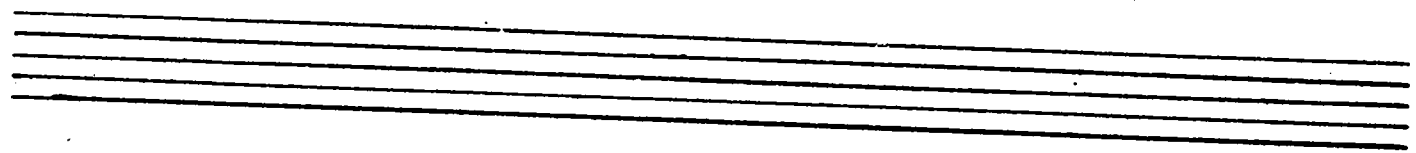


The second system of the handwritten musical score consists of five staves. The top staff is in treble clef with a key signature of one flat, containing a melodic line with eighth and sixteenth notes. The second staff is in bass clef with a key signature of one flat, featuring a bass line with eighth notes and rests. The third staff is in bass clef with a key signature of two flats, containing a bass line with eighth notes and rests. The fourth staff is in bass clef with a key signature of two flats, continuing the bass line. The fifth staff is in bass clef with a key signature of one flat, featuring a more complex bass line with sixteenth notes and rests. The system concludes with a double bar line.

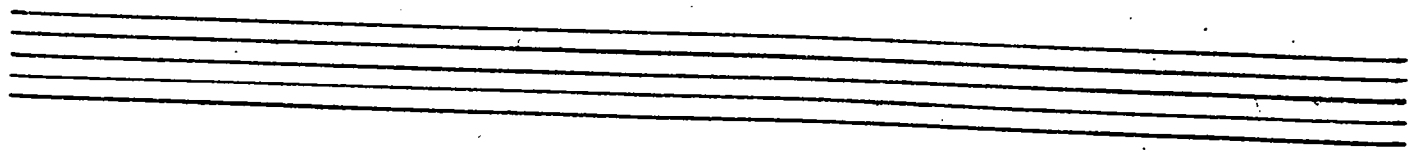


*Grand Air de Guerre*

The first system of the handwritten musical score consists of five staves. The top staff is in treble clef with a key signature of one sharp (F#) and a common time signature (C). It begins with a melodic line of eighth and sixteenth notes. The second staff is in bass clef with a key signature of one sharp (F#) and a common time signature (C), providing a harmonic accompaniment. The third, fourth, and fifth staves are also in bass clef with a key signature of one sharp (F#) and a common time signature (C), continuing the accompaniment with various rhythmic patterns and rests.



The second system of the handwritten musical score consists of five staves. The top staff is in treble clef with a key signature of one sharp (F#) and a common time signature (C). It continues the melodic line from the first system. The second staff is in bass clef with a key signature of one sharp (F#) and a common time signature (C). The third, fourth, and fifth staves are also in bass clef with a key signature of one sharp (F#) and a common time signature (C), providing a harmonic accompaniment.



Handwritten musical score for the first system, consisting of five staves. The top staff is in treble clef with a key signature of two sharps (F# and C#). The remaining four staves are in bass clef. The notation includes various note values, rests, and dynamic markings such as 'f' and 'mf'.

A set of five empty musical staves.

Handwritten musical score for the second system, consisting of five staves. The top staff is in treble clef with a key signature of two sharps (F# and C#). The remaining four staves are in bass clef. The notation includes various note values, rests, and dynamic markings such as 'f' and 'mf'.

A set of five empty musical staves.

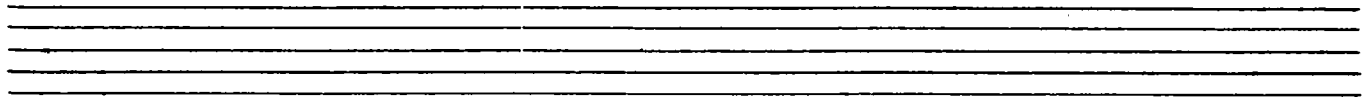
Handwritten musical score for the first system, consisting of five staves. The top staff is in treble clef with a key signature of two sharps (F# and C#). The remaining four staves are in bass clef with the same key signature. The notation includes various note values, rests, and accidentals.

A set of five empty musical staves.

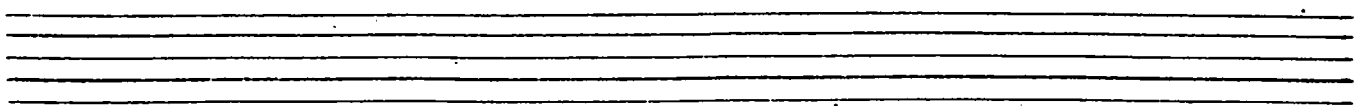
Handwritten musical score for the second system, consisting of five staves. The top staff is in treble clef with a key signature of two sharps (F# and C#). The remaining four staves are in bass clef with the same key signature. The notation includes various note values, rests, and accidentals.

A set of five empty musical staves.

Handwritten musical score for the first system, consisting of five staves. The top staff is a treble clef with a key signature of two sharps (F# and C#). The subsequent four staves are bass clefs. The music consists of a melodic line in the treble and a bass accompaniment in the bass clefs. The notation includes various note values, rests, and accidentals.



Handwritten musical score for the second system, consisting of five staves. The top staff is a treble clef with a key signature of two sharps (F# and C#). The subsequent four staves are bass clefs. The music continues with a melodic line in the treble and a bass accompaniment in the bass clefs.



44

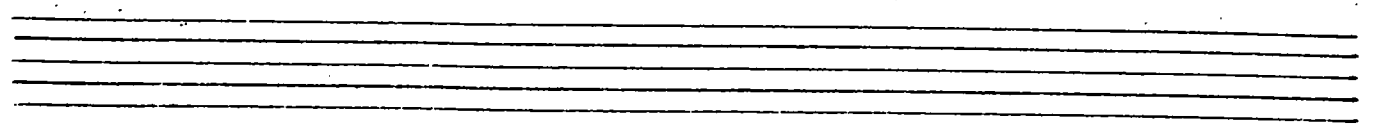
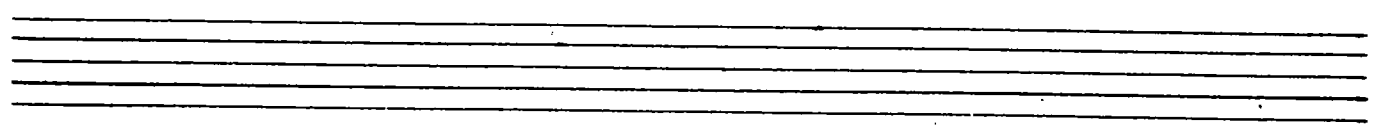
The first system of handwritten musical notation consists of five staves. The top staff is in treble clef, with a key signature of two sharps (F# and C#) and a 4/4 time signature. It contains a melodic line with various note values including quarter, eighth, and sixteenth notes, and rests. The subsequent four staves are in bass clef and provide harmonic accompaniment with chords and single notes. The system concludes with a double bar line.

Two empty musical staves, consisting of five lines each, positioned below the first system.

The second system of handwritten musical notation consists of five staves. The top staff is in treble clef, with a key signature of two sharps (F# and C#) and a 4/4 time signature. It continues the melodic line from the first system. The following four staves are in bass clef and provide harmonic accompaniment. The system concludes with a double bar line.

Two empty musical staves, consisting of five lines each, positioned below the second system.

*Premier Passepied*





The first system of handwritten musical notation consists of five staves. The top staff begins with a treble clef and a key signature of two sharps (F# and C#). The notation includes various rhythmic values such as eighth and sixteenth notes, often grouped with beams. The music is written in a fluid, cursive style characteristic of 18th or 19th-century manuscript notation.

Three empty musical staves, consisting of three horizontal lines each, positioned below the first system of music.

The second system of handwritten musical notation also consists of five staves, continuing the piece from the first system. It maintains the same treble clef and key signature of two sharps. The notation is dense with rhythmic patterns, including many beamed notes and slurs.

Three empty musical staves, consisting of three horizontal lines each, positioned below the second system of music.

Handwritten musical notation for five staves. The notation is in a single system, starting with a treble clef and a key signature of two sharps (F# and C#). The first staff contains a melodic line with eighth and sixteenth notes, including some beamed sixteenth notes. The second staff continues the melody with similar rhythmic patterns. The third staff features a more complex melodic line with some grace notes. The fourth staff continues the melodic development. The fifth staff concludes the system with a final melodic phrase. The notation is dense and expressive, typical of a handwritten manuscript.

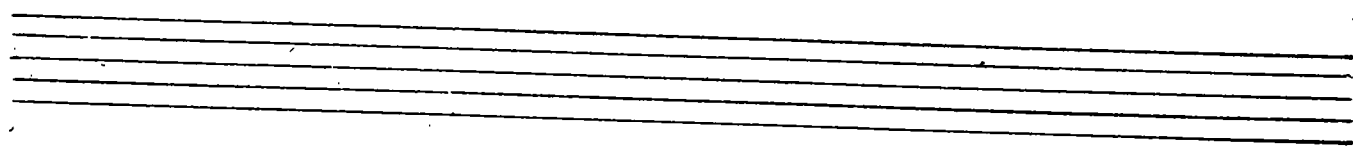
Two empty musical staves, consisting of five lines each, positioned below the first system of notation.

Handwritten musical notation for five staves. This system begins with a treble clef and a key signature of two sharps. The notation is sparse, featuring a few notes on the first staff, followed by a series of rests on the subsequent staves. The notes are mostly quarter and eighth notes, with some beaming. The overall impression is that of a sketch or a specific section of a larger piece.

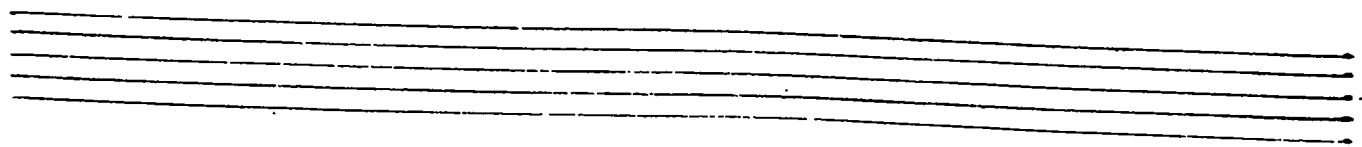
Two empty musical staves, consisting of five lines each, positioned below the second system of notation.

*Deux Papereux*

Handwritten musical score for 'Deux Papereux'. The score is written on five staves. The first staff is in treble clef with a 3/8 time signature. The second staff is in bass clef with a 3/8 time signature. The third and fourth staves are in treble clef with a 3/8 time signature. The fifth staff is in bass clef with a 3/8 time signature. The music consists of various rhythmic patterns, including eighth and sixteenth notes, and rests.



Handwritten musical score for the second system, consisting of five staves. The first staff is in treble clef with a 3/8 time signature. The second staff is in bass clef with a 3/8 time signature. The third and fourth staves are in treble clef with a 3/8 time signature. The fifth staff is in bass clef with a 3/8 time signature. The music continues with various rhythmic patterns and rests.



The first system of handwritten musical notation consists of five staves. The top staff begins with a treble clef and a key signature of one sharp (F#). The notation includes a variety of note values, including eighth and sixteenth notes, as well as rests. The music is written in a fluid, cursive style characteristic of historical manuscripts. The system concludes with a double bar line and a repeat sign.

A set of five empty musical staves, consisting of five horizontal lines each, positioned below the first system.

The second system of handwritten musical notation also consists of five staves. It continues the musical piece from the first system, maintaining the same notation style and clef. The music features complex rhythmic patterns and melodic lines. The system ends with a double bar line and a repeat sign.

A set of five empty musical staves, consisting of five horizontal lines each, positioned below the second system.

A handwritten musical score consisting of five staves. The notation is in a single system, with a treble clef on the first staff. The music features a variety of note values, including eighth and sixteenth notes, and rests. There are some markings above the notes, possibly indicating fingerings or dynamics. The score concludes with a double bar line and repeat dots on the fifth staff.

*Grand Air En fanfare*

A handwritten musical score titled "Grand Air En fanfare" consisting of six staves. The first staff begins with a treble clef, a key signature of two sharps (F# and C#), and a 3/4 time signature. The music is characterized by a strong, rhythmic fanfare style, featuring many quarter notes and eighth notes. The subsequent staves continue this rhythmic pattern, with some staves showing a more melodic line. The score ends with a double bar line and repeat dots on the sixth staff.

The image displays a handwritten musical score on page 51, organized into two systems of six staves each. The notation is written in black ink on white paper. Each staff begins with a treble clef (G-clef) on the first staff and a bass clef (F-clef) on the second staff of each system. The key signature consists of two sharps, F# and C#, indicated by two sharp symbols at the beginning of each system. The first system contains six staves of music. The first two staves feature complex melodic lines with slurs and ties. The third staff contains quarter notes with stems pointing up, some with sharp signs. The fourth and fifth staves show a sequence of quarter notes with stems pointing up. The sixth staff continues with quarter notes and stems pointing up. The second system also consists of six staves. The first two staves feature melodic lines with slurs and ties. The third staff contains quarter notes with stems pointing up, some with sharp signs. The fourth and fifth staves show a sequence of quarter notes with stems pointing up. The sixth staff continues with quarter notes and stems pointing up, ending with a sharp sign.

The first system of the handwritten musical score consists of six staves. The top two staves are in treble clef with a key signature of two sharps (F# and C#). The first staff contains a melodic line with eighth and sixteenth notes, including some beamed sixteenth notes. The second staff continues this melodic line. The next three staves (third, fourth, and fifth) are in bass clef and contain a steady accompaniment of quarter notes. The sixth staff is in bass clef and contains a melodic line with quarter and eighth notes.

The second system of the handwritten musical score consists of six staves. The top two staves are in treble clef with a key signature of two sharps. The first staff features a melodic line with eighth notes, some of which are beamed together. The second staff continues this melodic line. The third staff is in bass clef and contains a steady accompaniment of quarter notes. The fourth staff is in bass clef and contains a melodic line with quarter notes. The fifth staff is in bass clef and contains a melodic line with quarter notes and some beamed eighth notes. The sixth staff is in bass clef and contains a melodic line with quarter notes and some beamed eighth notes.

This page contains a handwritten musical score for page 53. The score is organized into two systems, each enclosed in a large bracket on the left side. The first system consists of seven staves. The top two staves are in treble clef with a key signature of one sharp (F#). The remaining five staves are in bass clef with a key signature of one sharp (F#). The notation includes various note values, rests, and dynamic markings. The second system also consists of seven staves. The top two staves are in treble clef with a key signature of one sharp (F#). The remaining five staves are in bass clef with a key signature of one sharp (F#). The notation includes various note values, rests, and dynamic markings.



A handwritten musical score for guitar, consisting of 14 staves. The score is written in treble clef with a key signature of two sharps (F# and C#). The notation includes various rhythmic values such as eighth, sixteenth, and quarter notes, as well as rests and accidentals. The first two staves feature melodic lines with some chromaticism and grace notes. The next four staves (3-6) are primarily chordal accompaniment, with many notes marked with a '9' indicating a natural ninth. The final six staves (7-12) contain more complex melodic and harmonic passages, including some sixteenth-note runs and chromatic lines. The score concludes with a final cadence on the 14th staff.

This page of handwritten musical notation, numbered 55, contains a complex score for guitar. The score is organized into two systems of staves. The first system consists of six staves: the top two are in treble clef and contain melodic lines with eighth and sixteenth notes, often beamed together; the next three are in bass clef and feature a steady bass line of quarter notes, some with a 'q' marking; the final staff in this system is in treble clef and contains a melodic line with quarter notes and rests. The second system also consists of six staves: the top two are in treble clef with melodic lines; the next three are in bass clef with a bass line of quarter notes; and the final staff is in treble clef with a melodic line. The notation includes various note values, rests, and dynamic markings such as 'f' and 'q'. The handwriting is clear and professional.

A handwritten musical score consisting of six staves. The first two staves are in treble clef with a key signature of two sharps (F# and C#). The remaining four staves are in bass clef with the same key signature. The music is written in a style that appears to be a simple exercise or a short piece, featuring various rhythmic values and melodic lines. The notation includes notes, rests, and bar lines. The piece concludes with a double bar line and repeat dots on the sixth staff.

A handwritten musical score consisting of five staves. The first staff is in treble clef with a key signature of two sharps (F# and C#) and a 3/4 time signature. The word "Pascaille" is written in cursive below the first staff. The remaining four staves are in bass clef with the same key signature and time signature. The music is written in a style that appears to be a simple exercise or a short piece, featuring various rhythmic values and melodic lines. The notation includes notes, rests, and bar lines. The piece concludes with a double bar line and repeat dots on the fifth staff.

57

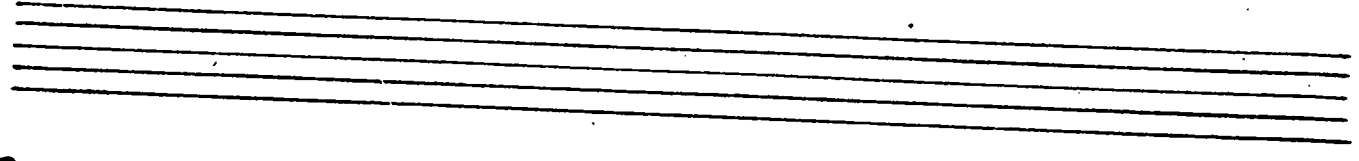
Handwritten musical score for the first system, consisting of five staves. The notation includes treble and bass clefs, a key signature of two sharps (F# and C#), and various rhythmic values such as eighth and sixteenth notes, rests, and accidentals. The system concludes with a double bar line and a fermata.

A set of five empty musical staves.

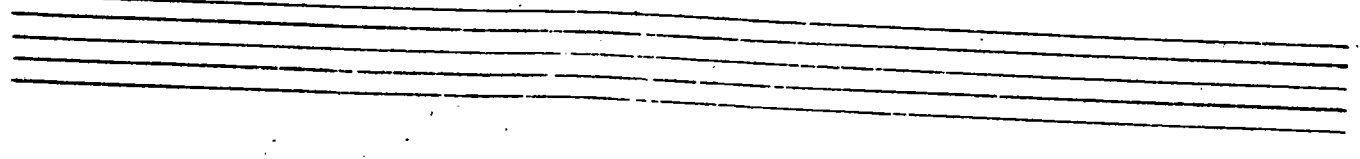
Handwritten musical score for the second system, consisting of five staves. The notation includes treble and bass clefs, a key signature of two sharps (F# and C#), and various rhythmic values such as eighth and sixteenth notes, rests, and accidentals. The system concludes with a double bar line and a fermata.

A set of five empty musical staves.

The first system of handwritten musical notation consists of five staves. The top staff is in treble clef with a key signature of two sharps (F# and C#). It contains a melodic line with various note values and rests. The second staff is in alto clef and contains a line of notes, many of which are marked with a '9' above them. The third and fourth staves are in bass clef and contain more melodic lines. The fifth staff is in bass clef and contains a line of notes, also with some '9' markings. The system concludes with a double bar line and a fermata.



The second system of handwritten musical notation consists of five staves. The top staff is in treble clef with a key signature of two sharps. It contains a melodic line with various note values and rests. The second staff is in alto clef and contains a line of notes, many of which are marked with a '9' above them. The third and fourth staves are in bass clef and contain more melodic lines. The fifth staff is in bass clef and contains a line of notes, also with some '9' markings. The system concludes with a double bar line and a fermata.



Handwritten musical score for the first system, consisting of five staves. The notation is in treble clef with a key signature of two sharps (F# and C#). The music features a variety of rhythmic patterns, including eighth and sixteenth notes, and rests. The first staff begins with a treble clef and a key signature of two sharps. The notation is dense and includes many accidentals and slurs.

Four empty musical staves, likely representing a continuation of the system or a placeholder for another instrument part.

Handwritten musical score for the second system, consisting of five staves. The notation is in treble clef with a key signature of two sharps (F# and C#). The music continues with similar rhythmic patterns and melodic lines as the first system. The notation is dense and includes many accidentals and slurs.

Four empty musical staves, likely representing a continuation of the system or a placeholder for another instrument part.

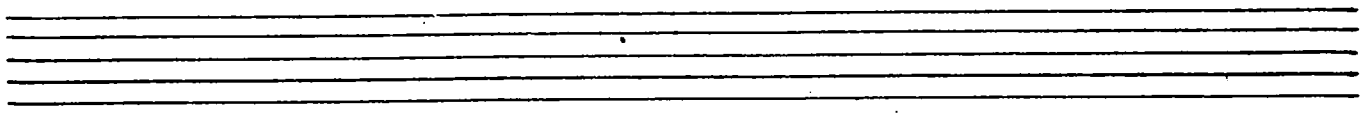
The first system of the handwritten musical score consists of five staves. The top staff is in treble clef, and the bottom staff is in bass clef. Both staves have a key signature of two sharps (F# and C#). The music is written in a style that appears to be a form of guitar or piano accompaniment, with various note values, rests, and accidentals. The notation includes eighth notes, quarter notes, and half notes, along with some complex rhythmic patterns. There are several sharp signs (#) scattered throughout the notation, possibly indicating specific notes or fret positions.

A set of five empty musical staves, consisting of five horizontal lines, positioned between the first and second systems of the score.

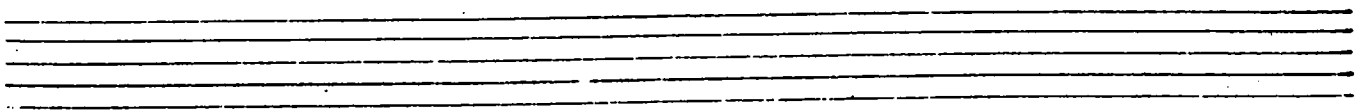
The second system of the handwritten musical score consists of five staves. The top staff is in treble clef, and the bottom staff is in bass clef. Both staves have a key signature of two sharps (F# and C#). The music is written in a style that appears to be a form of guitar or piano accompaniment, with various note values, rests, and accidentals. The notation includes eighth notes, quarter notes, and half notes, along with some complex rhythmic patterns. There are several sharp signs (#) scattered throughout the notation, possibly indicating specific notes or fret positions.

A set of five empty musical staves, consisting of five horizontal lines, positioned at the bottom of the page.

The first system of handwritten musical notation consists of five staves. The top staff is in treble clef and contains a melodic line with eighth and sixteenth notes, some marked with 'x'. The second staff is in bass clef and features a rhythmic accompaniment with quarter notes and rests, some marked with 'x'. The third and fourth staves are in treble clef and contain melodic lines with eighth and sixteenth notes. The fifth staff is in bass clef and contains a rhythmic accompaniment with quarter notes and rests. The system concludes with a double bar line.



The second system of handwritten musical notation consists of five staves. The top staff is in treble clef and contains a melodic line with eighth and sixteenth notes, some marked with 'x'. The second staff is in bass clef and features a rhythmic accompaniment with quarter notes and rests, some marked with 'x'. The third and fourth staves are in treble clef and contain melodic lines with eighth and sixteenth notes. The fifth staff is in bass clef and contains a rhythmic accompaniment with quarter notes and rests. The system concludes with a double bar line.





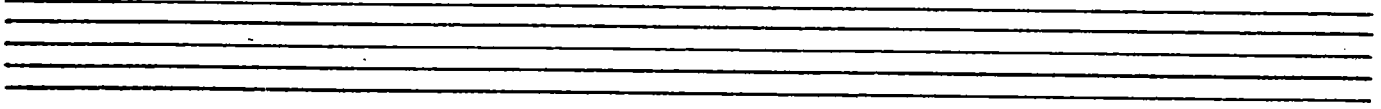
The first system of handwritten musical notation consists of five staves. The top staff begins with a treble clef and a key signature of one sharp (F#). It contains a series of notes, including eighth and sixteenth notes, with some accidentals. The second staff uses a bass clef and contains a melodic line with eighth notes. The third staff uses a bass clef and contains a melodic line with eighth notes. The fourth staff uses a bass clef and contains a melodic line with eighth notes. The fifth staff uses a bass clef and contains a melodic line with eighth notes. The system concludes with a double bar line.



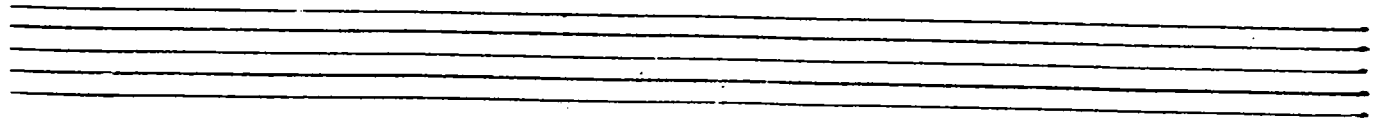
The second system of handwritten musical notation consists of five staves. The top staff begins with a treble clef and a key signature of one sharp (F#). It contains a series of notes, including eighth and sixteenth notes, with some accidentals. The second staff uses a bass clef and contains a melodic line with eighth notes. The third staff uses a bass clef and contains a melodic line with eighth notes. The fourth staff uses a bass clef and contains a melodic line with eighth notes. The fifth staff uses a bass clef and contains a melodic line with eighth notes. The system concludes with a double bar line.



Handwritten musical score for the first system, consisting of five staves. The top staff is in treble clef with a key signature of one sharp (F#) and a common time signature (C). The subsequent four staves are in bass clef. The music features a variety of note values including quarter, eighth, and sixteenth notes, along with rests and slurs.

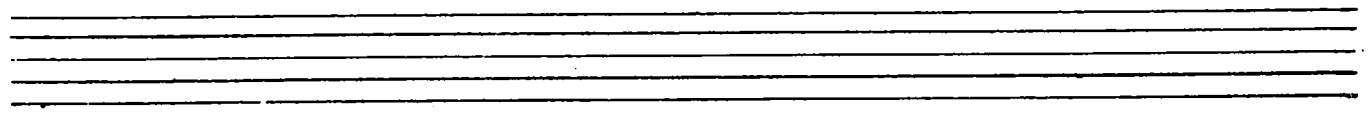


Handwritten musical score for the second system, consisting of five staves. The top staff is in treble clef with a key signature of one sharp (F#) and a common time signature (C). The subsequent four staves are in bass clef. The music continues with various note values and rests.

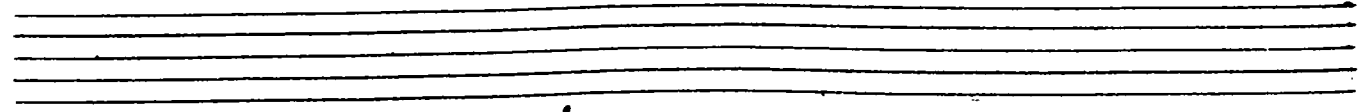


64

The first system of handwritten musical notation consists of five staves. The top staff begins with a treble clef and contains a series of eighth and sixteenth notes, some with accidentals. The second staff starts with a bass clef and features a mix of quarter and eighth notes. The third and fourth staves continue the melodic and harmonic development with similar rhythmic patterns. The fifth staff concludes the system with a final melodic phrase. The notation is dense and shows clear rhythmic structure.



The second system of handwritten musical notation also consists of five staves. The top staff uses a treble clef and contains a melodic line with several accidentals. The second staff begins with a bass clef and shows a rhythmic accompaniment. The third and fourth staves continue the musical ideas from the first system, with various note values and rests. The fifth staff ends the system with a final melodic flourish. The handwriting is consistent with the first system.



The first system of the handwritten musical score consists of five staves. The top staff is in treble clef with a key signature of one sharp (F#) and a 3/4 time signature. The music features a variety of note values including eighth and sixteenth notes, often beamed together. The second staff is in bass clef with a key signature of one sharp. The third and fourth staves are in treble clef with a key signature of one sharp. The fifth staff is in bass clef with a key signature of one sharp. The system concludes with a double bar line.

A set of five empty musical staves, consisting of five horizontal lines, positioned below the first system of music.

The second system of the handwritten musical score consists of five staves. The top staff is in treble clef with a key signature of two sharps (F# and C#) and a 3/4 time signature. The music continues with similar rhythmic patterns as the first system. The second staff is in bass clef with a key signature of two sharps. The third and fourth staves are in treble clef with a key signature of two sharps. The fifth staff is in bass clef with a key signature of two sharps. The system concludes with a double bar line.

A set of five empty musical staves, consisting of five horizontal lines, positioned below the second system of music.

The first system of handwritten musical notation consists of five staves. The top staff is a treble clef with a key signature of two sharps (F# and C#). It contains a melodic line with eighth and sixteenth notes. The second staff is an alto clef with a key signature of two sharps, featuring a bass line with quarter notes and rests. The third staff is a tenor clef with a key signature of two sharps, also featuring a bass line with quarter notes and rests. The fourth staff is a bass clef with a key signature of two sharps, featuring a bass line with quarter notes and rests. The fifth staff is a bass clef with a key signature of two sharps, featuring a bass line with quarter notes and rests.

Two empty musical staves, one consisting of a single line and the other of a double line, positioned below the first system of notation.

The second system of handwritten musical notation consists of five staves. The top staff is a treble clef with a key signature of two sharps (F# and C#). It contains a melodic line with eighth and sixteenth notes. The second staff is an alto clef with a key signature of two sharps, featuring a bass line with quarter notes and rests. The third staff is a tenor clef with a key signature of two sharps, also featuring a bass line with quarter notes and rests. The fourth staff is a bass clef with a key signature of two sharps, featuring a bass line with quarter notes and rests. The fifth staff is a bass clef with a key signature of two sharps, featuring a bass line with quarter notes and rests.

Two empty musical staves, one consisting of a single line and the other of a double line, positioned below the second system of notation.

Handwritten musical score, system 1. The system consists of five staves. The first staff is a treble clef with a key signature of two sharps (F# and C#). The music is written in a complex, rhythmic style with many sixteenth and thirty-second notes. A circled number '67' is written in the top right corner of the system. The second, third, and fourth staves appear to be accompaniment for a piano or guitar, with various chordal and melodic lines. The fifth staff continues the melodic line from the first staff. The system ends with a double bar line.

Empty musical staves, consisting of five horizontal lines.

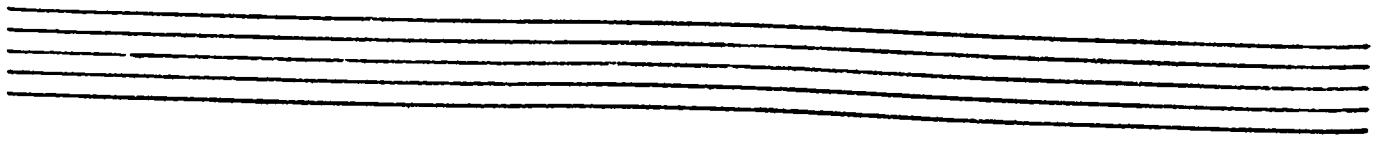
Handwritten musical score, system 2. The system consists of five staves. The first staff is a treble clef with a key signature of two sharps (F# and C#). The music is written in a complex, rhythmic style with many sixteenth and thirty-second notes. The second, third, and fourth staves appear to be accompaniment for a piano or guitar, with various chordal and melodic lines. The fifth staff continues the melodic line from the first staff. The system ends with a double bar line.

Empty musical staves, consisting of five horizontal lines.

Handwritten musical notation for the first system, consisting of five staves. The notation includes various rhythmic values such as eighth and sixteenth notes, and rests. The key signature is two sharps (F# and C#).



Handwritten musical notation for the second system, consisting of five staves. The notation includes various rhythmic values such as eighth and sixteenth notes, and rests. The key signature is two sharps (F# and C#).



Handwritten musical score, first system. It consists of five staves. The top staff is a treble clef with a key signature of two sharps (F# and C#) and a 9/8 time signature. The music features a melodic line with eighth and sixteenth notes, and a bass line with quarter and eighth notes. A circled number '69' is written at the end of the first staff. Below the five staves are two empty staves.

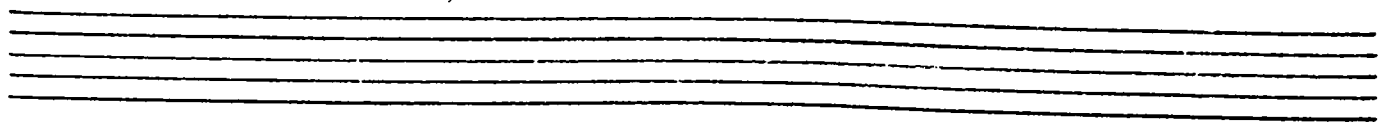
Handwritten musical score, second system. It consists of five staves. The top staff is a treble clef with a key signature of two sharps (F# and C#) and a 9/8 time signature. The music continues with a melodic line and a bass line. Below the five staves are two empty staves.



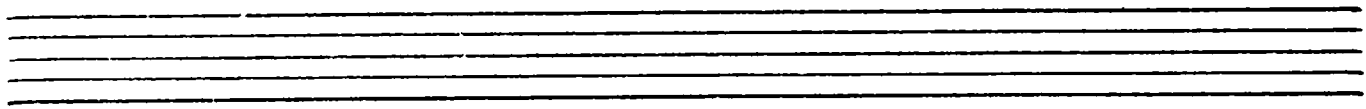
Handwritten musical notation for the first system, consisting of five staves. The notation includes various note values, rests, and dynamic markings such as 'f'. The key signature is three sharps (F#, C#, G#).



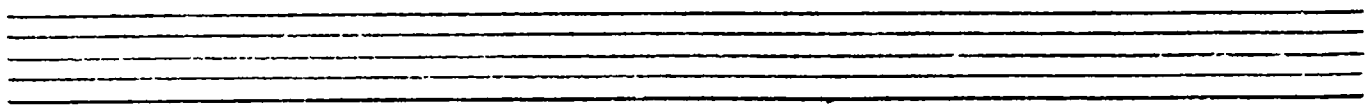
Handwritten musical notation for the second system, consisting of five staves. The notation includes various note values, rests, and dynamic markings such as 'f'. The key signature is three sharps (F#, C#, G#).



The first system of handwritten musical notation consists of five staves. The top staff begins with a treble clef and a key signature of two sharps (F# and C#). The notation includes eighth and sixteenth notes, some beamed together, and rests. The second staff features a series of quarter notes with stems pointing down. The third staff continues with eighth and sixteenth notes. The fourth staff has quarter notes with stems pointing down. The fifth staff contains eighth and sixteenth notes, some beamed together. The system concludes with a double bar line.



The second system of handwritten musical notation consists of five staves. The top staff begins with a treble clef and a key signature of two sharps (F# and C#). The notation includes quarter notes, eighth notes, and sixteenth notes, some beamed together. The second staff has quarter notes with stems pointing down. The third staff continues with quarter notes and rests. The fourth staff features eighth and sixteenth notes, some beamed together. The fifth staff has quarter notes with stems pointing down. The system concludes with a double bar line.



The first system of handwritten musical notation consists of five staves. The top staff uses a treble clef and a key signature of two sharps (F# and C#). It contains a complex melodic line with many beamed notes and rests. The second staff has a similar key signature and contains a line of notes with some rests. The third staff also has two sharps and contains notes with rests. The fourth staff has two sharps and contains notes with rests. The fifth staff has two sharps and contains notes with rests. The system concludes with a double bar line.

Two empty musical staves, one above the other, consisting of five lines each.

The second system of handwritten musical notation consists of five staves. The top staff uses a treble clef and a key signature of two sharps (F# and C#). It contains a melodic line with notes and rests. The second staff has two sharps and contains notes with rests. The third staff has two sharps and contains notes with rests. The fourth staff has two sharps and contains notes with rests. The fifth staff has two sharps and contains notes with rests. The system concludes with a double bar line.

Two empty musical staves, one above the other, consisting of five lines each.